

Focal



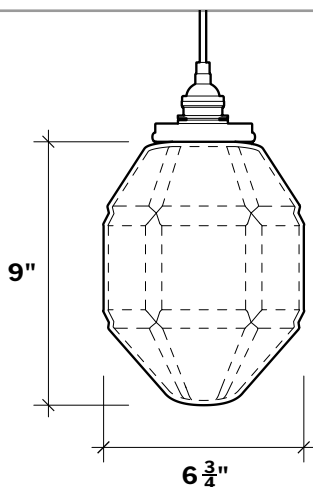
Mold No.	15260
Collection	Antique
Year	2024

The Focal Pendant Light showcases a handmade antique glass shade with a faceted surface, creating clean surfaces for the textured glass. Its defined surfaces capture and disperse light in a soft diffusion, inviting a warm ambiance with a hint of vintage and antique charm.

Featured in Photo

Clear Handmade Glass Shade

Black Finish Hardware, LED Bulb (2700K)



Material

Handmade mold-blown glass



Electrical & Hardware

field-cuttable, 8' fabric braided cord; custom options available at inquiry

Lamping Information

(bulb not provided, equivalent LED bulb may be used)

5.0 inch T10 bulb

5.5 W LED filament

100-130 V

2700K

average 15,000 hour lifespan

450 Lumens

TRIAC dimmable

Finish Options



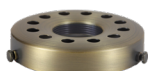
Black



Brass



Nickel



Antique Brass

Lead Time

Generally in stock (in limited quantities) and ships within 3-5 weeks

Product Page

www.silicastudio.com/shop/p/focal-pendant-light

Dimensions

9" H X 6.75" W X 6.75" D

Fitter Finish Options

Overview of offered finishes, not available for every product.



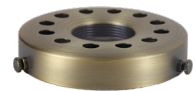
Black



Brass



Nickel



Antique Brass

Ceiling + Cord Color Options

Cords are 8' and field-cuttable, not available for every product.



Black



Brass



Nickel



Antique Brass

Glass Color Options

Color available in limited quantities; contact Silica Studio for availability.



Gold Ruby EL



Olive Brown



Hyacinth Violet



Steel Blue



Enamel White



Pale Oceana



Salmon Pink



Gold Amethyst



Copper Blue



Grey



Jade Green



Cinnamon

Custom Color Requests

Need a custom glass color or hardware finish option? Contact us at silicastudio@rockcottageglassworks.com with what pendants you're interested in, and we'll work with you to create a custom order.